

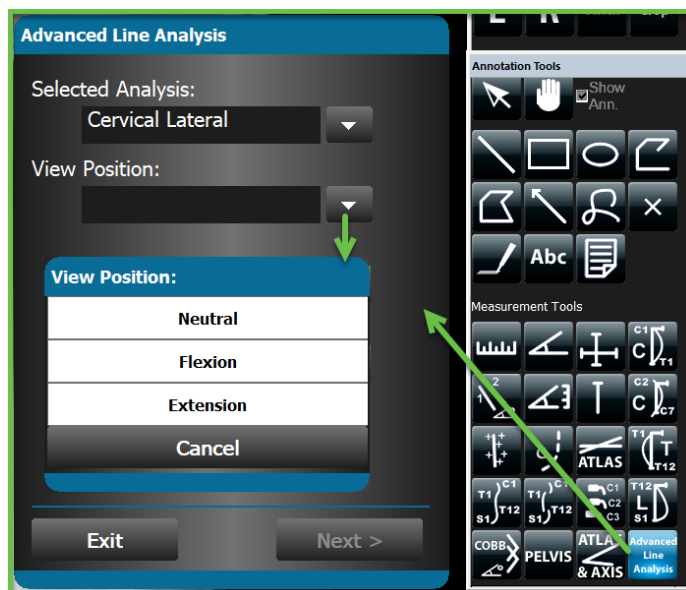
Cervical Flexion/Extension – Advanced Line Analysis

The Advanced Line Analysis allows you to select points once, for multiple different line measures.

As with the Basic and Quantitative Measurement Tools, the software will guide you on the image and below the image in the status bar, as to where you need to click on the anatomy of the image for the selected measures.

*Point Placement: Continuity and accuracy is very important.
Please reference the Tips – Advanced Line Analysis document.*

Click on the **Advanced Line Analysis** button and select the **View Position**.

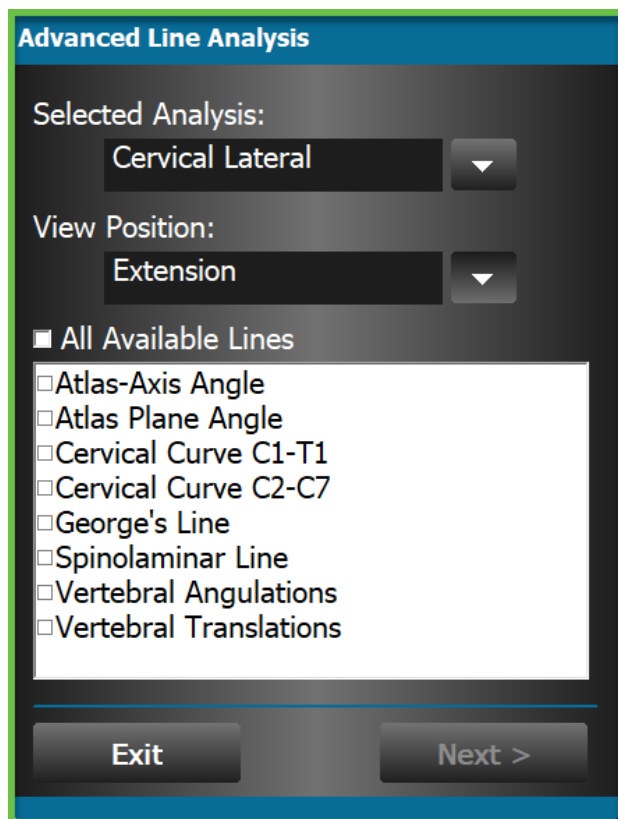


Select what line(s) you wish to draw on that view.

You can check the box, or simply click anywhere on that line to select.

Click on **Next** to start selecting your point placement.

Point placement is selected by using your left mouse button.



The available lines will be the same for the Neutral, Flexion and Extension View Positions.

While the system allows you to use any line on any view, here is what they are typically used on:

View Position	Lines
Neutral	Atlas-Axis; Atlas Plane; Cervical C1-T1; Cervical C2-C7
Flexion	Vertebral Translations; Vertebral Angulations
Extension	Vertebral Translations
All Views	George's Line; Spinolaminar Line

As you are selecting the point placement, if you make an incorrect placement, simply right click anywhere on the image to remove the last point added. Keep right clicking to remove the next last point, and so on.

To remove all point placements and deactivate the Advanced Line Analysis button, click on the

Select Annotation Object button. 

Once the last point placement is selected, the Advanced Line Analysis button will become de-active, and the lines/measures will appear on the image.

Reference the Context Menu – Advanced Line Analysis document to learn how to add lines, modify/show points, hide, or customize the advanced line measurements.
